

**STEP-BY STEP  
GUIDE**

# In the name of the king

PHPI looks at the installation of a Lifescience Water-King physical water conditioner.



## Step 1

Once a suitable location within 45cm of the pipe and 1.5m of a power supply has been found, the control box should be held in place so the fixing holes can be marked.



## Step 2

Drill pilot holes where marked and insert wall plugs. The control box can now be mounted on the wall using suitable wall fixings.



## Step 6

Installation is now complete and the unit can be plugged in and switched on. Check the power indicator lights are flashing. The unit is now operating.

**W**ith an ever greater emphasis on energy savings in new build and refurbishment projects, combined with the requirements of The Domestic Heating Compliance Guide (Part L Regulations 2006), treating hard water is now more important than ever. Installing an effective physical water conditioner will help prevent limescale build-up – saving energy, protecting water heaters from failure and reducing the need for site maintenance.

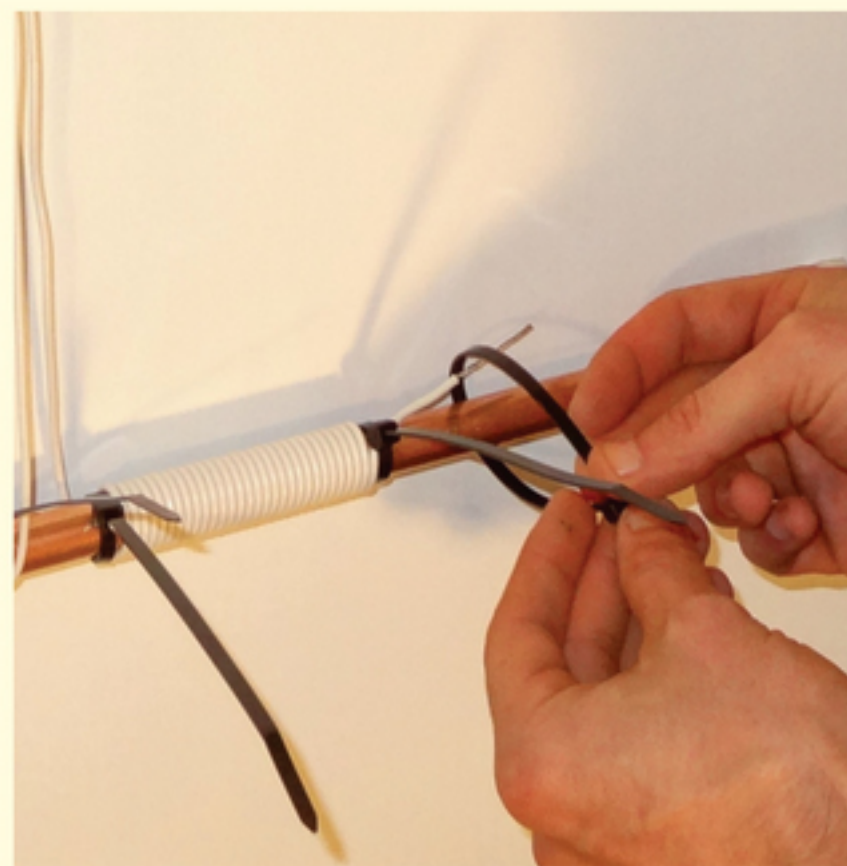
Darren Stacey, Head of Sales & Marketing at Lifescience Products, provides a step-by-step installation guide for the Water-King physical water conditioner – described as an easy to install and completely maintenance free alternative to salt based softening.

**Enquiry code P501**



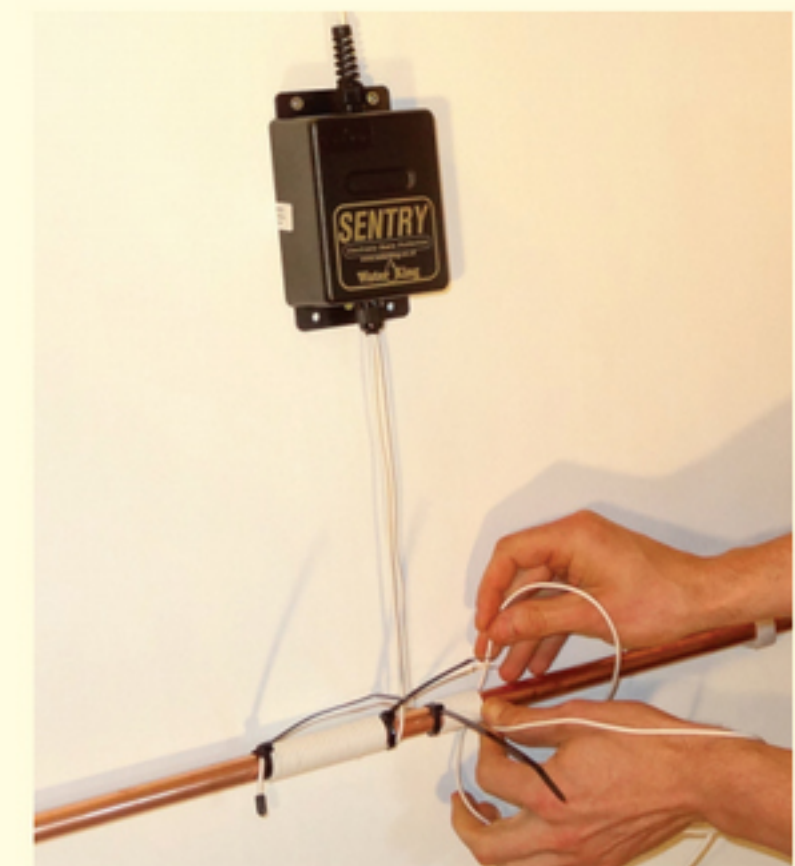
## Step 5

Water-King WK3, WK4 and WK5 have socket connections to link to the building management system to report power failure. The output jack should be inserted ready for connection to its terminals.



## Step 4

The Sentry and WK2 can perform better when one aerial is grounded to a metal pipe. To ground an aerial remove the rubber cap and expose 1 to 2cm of wire before securing it with a cable tie. Never ground more than one aerial.



## Step 3

Wind the aerials around the pipe in opposite directions, starting from a central point. Aerials on all units are paired. Secure the ends of each aerial with cable ties.